

***SAFE PARKING
ADVOCACY
MEETING UPDATE***

April 12th, 2021

Presented by:



WWW.FREMONTFOREVERYONE.COM

Safe Parking Meeting Agenda



The goals of this meeting are to:

- 1) **Educate** and bring attendees up to speed on history and urgency of issue.
- 2) **Staff Update and Introductions** - to allow Staff to share updates on the program's roll-out.
- 3) **Open Discussion & Q&A** to help attendees understand how to better support the Safe Parking Program.
- 4) **Next Steps** based on feedback.

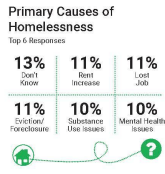
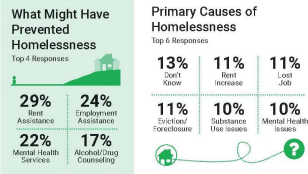
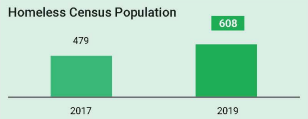
City of Fremont

2019 EveryOne Counts

Homeless Point-in-Time Count & Survey

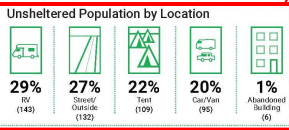
Every two years, during the last 10 days of January, communities across the country conduct comprehensive counts of people experiencing homelessness in order to measure the prevalence of homelessness in each local community.

The 2019 Alameda County EveryOne Home Point-in-Time Count was a community-wide effort conducted on January 30th, 2019. In the weeks following the street count, a survey was administered across Alameda County. In the city of Fremont, 290 unsheltered and sheltered homeless individuals were surveyed in order to profile their experience and characteristics.

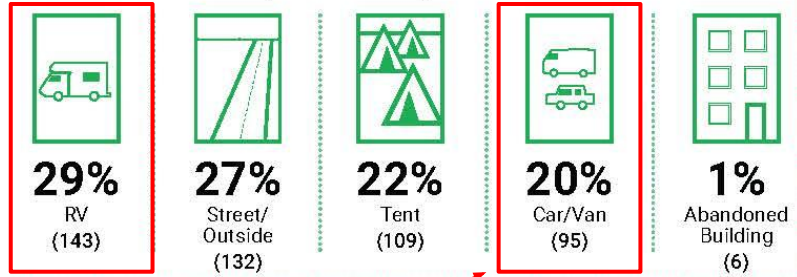


Sheltered/Unsheltered Population by City

City	Sheltered	Unsheltered
Alameda	99	132
Albany	0	35
Berkeley	295	813
Dublin	0	8
Emeryville	0	178
Fremont	123	485
Hayward	115	372
Livermore	85	179
Newark	30	59
Oakland	861	3,210
Piedmont	0	0
Pleasanton	0	70
San Leandro	74	344
Unincorporated	28	321
Union City	0	106
Total	1,710	6,312



Unsheltered Population by Location



Based on 2019 Point-in-Time Count, over 49% of our unhoused are living in RVs.

Targeting Safe Parking is the **best use of our time and resources to help more people.**



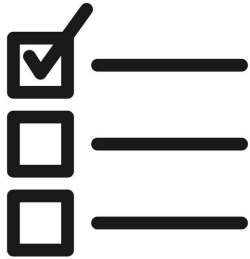


Recent history:

February 1st, 2020 - Fremont places boulders on Kato Rd, creating major media coverage.

February 28th, 2020 - Joint referral by CM Keng & CM Kassan to Study Safe Parking in the City of Fremont.

December 09, 2020 - City of Mountain View approves RV Ban. Housing advocates circulated a petition referendum which was ultimately rejected by the voters.



Preview of Next Steps:

City is planning to roll out a 3-Phase approach:

- 1) Update local ordinances to allow for expanded RV parking on local streets, and an expedited permitting process for Faith-based Communities.
- 2) Address need where it currently exists by providing amenities and support in existing RV congregational areas (e.g. Albrae St). Reach out to Faith-Based Communities for support.
- 3) Site selection and funding for a permanent Safe Parking Site



**THANK
YOU**

Thank you for attending!

Kick off questions for discussion / consideration:

- How can local advocates best support the program?
- Are there any plans for the \$300k from the Niles Gateway Project?
- Has there been any success with finding faith-based sites?
- Is there a possibility for collaboration with Newark and Union City on funding of sites.